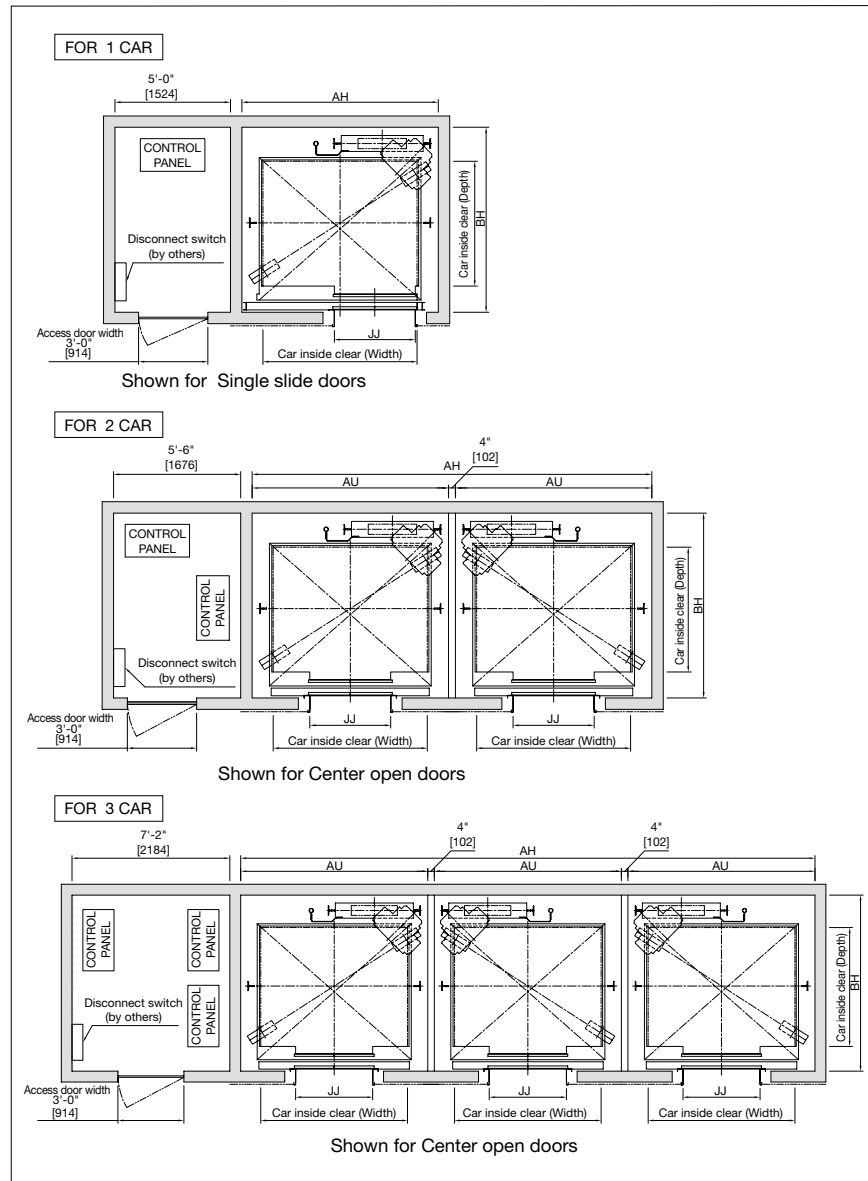


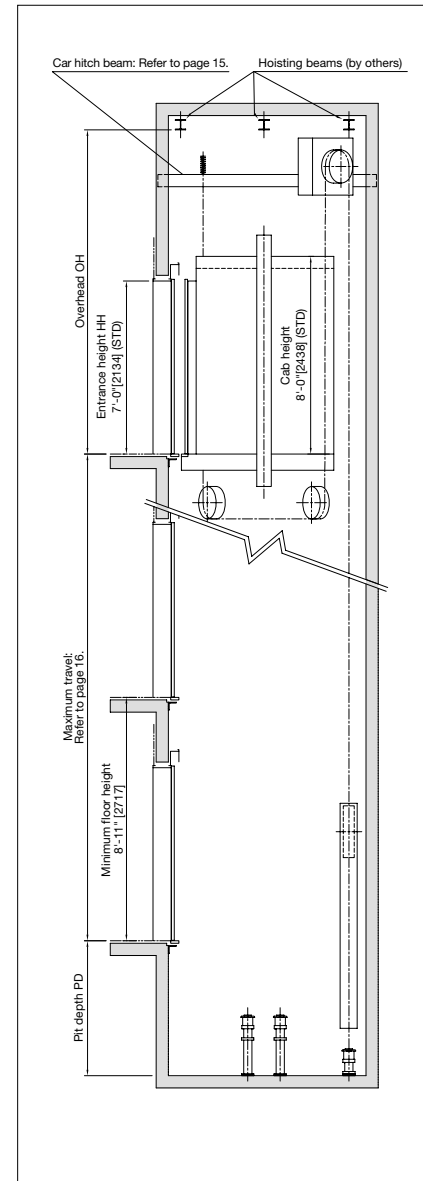
BASIC SPECIFICATIONS

Front Opening

Hoistway Plan

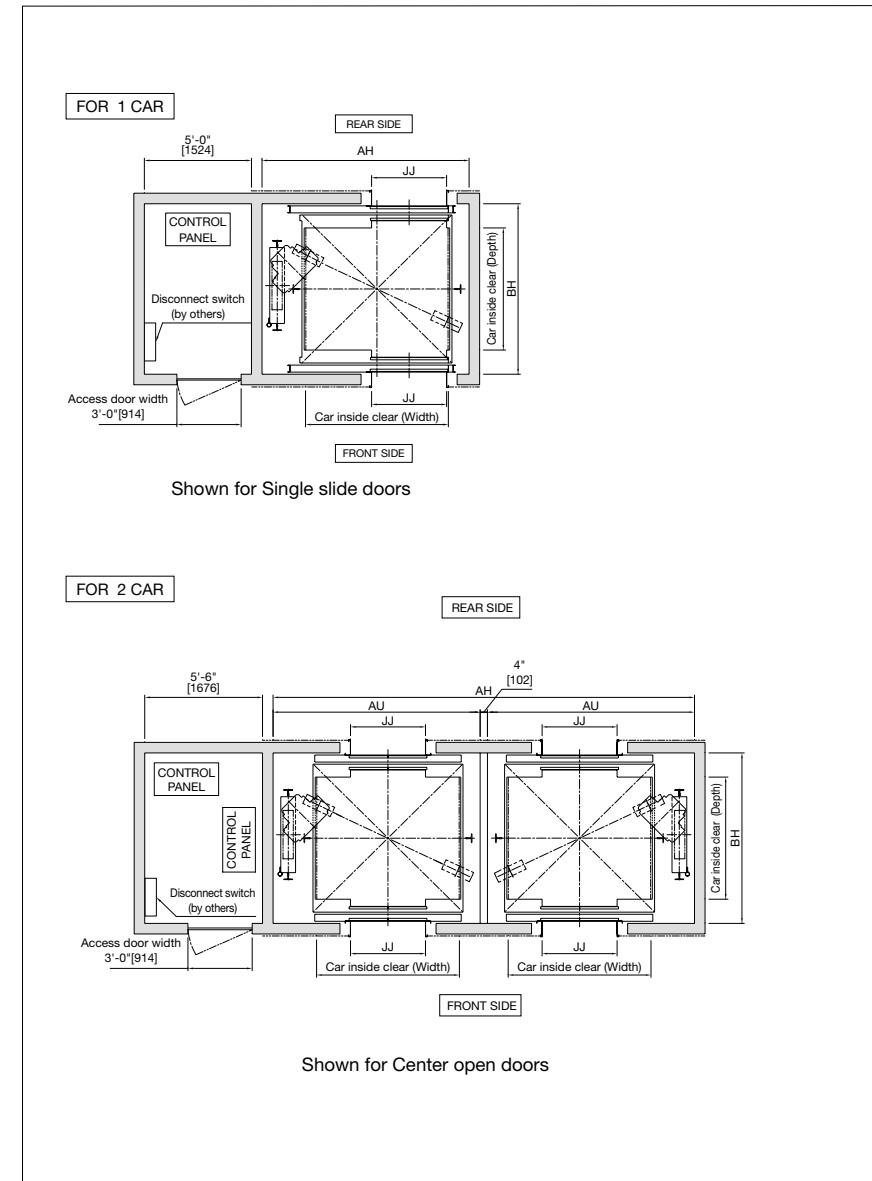


Hoistway Section

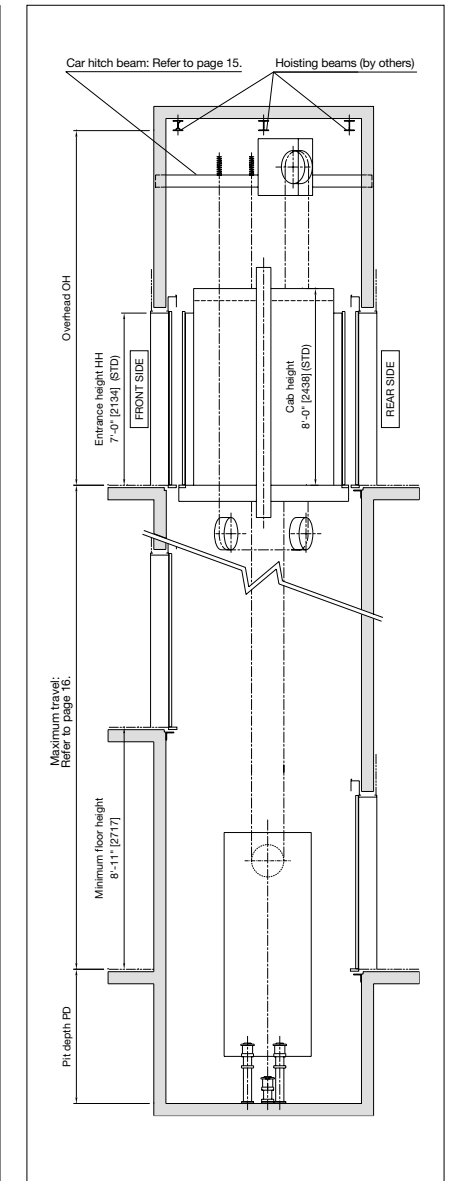


Front & Rear Opening

Hoistway Plan



Hoistway Section



Capacity, Speed, Door Type, Car Inside & Hoistway Dimensions*1

Opening	Capacity (lbs) [kg]	Rated speed (fpm) [mpm]	Door type*2	Car inside clear dimensions		Entrance width JJ (ft./in.) [mm]	Minimum hoistway dimensions*3		
				Width (ft./in.) [mm]	Depth (ft./in.) [mm]		AH x BH*4 (ft./in.) [mm]	PD*5 (ft./in.) [mm]	OH*6 (ft./in.) [mm]
Front	2000 [900]	200 [60]	SS	5'-8" [1727]	4'-3 3/4" [1315]	3'-0" [914]	7'-6" x 6'-11" [2286 x 2108]	5'-5 1/2" [1664]	14'-3" [4343]
	2500 [1150]	200 [60]					8'-6" x 6'-11" [2591 x 2108]	5'-11 1/2" [1816]	14'-6" [4419]
	3000 [1350]	200 [60]	SS, CO	6'-8" [2032]	3'-6" [1067]	8'-6" x 7'-4" [2591 x 2235]	5'-5 1/2" [1664]	14'-3" [4343]	
	3500 [1600]	200 [60]				8'-6" x 8'-0" [2591 x 2438]	5'-11 1/2" [1816]	14'-6" [4419]	
Front & Rear	3500 [1600]	350 [105]				9'-7" x 7'-11 1/4" [2921 x 2420]	5'-5 1/2" [1664]	14'-3" [4343]	

Specifications

Speed	200fpm (60mpm)	350fpm (105mpm)
Maximum number of stops	10	
Maximum travel (ft.) [m]	75'-0" [22.8]	98'-5" [30]
Minimum floor height (ft.) [mm]	8'-11" [2717]*7	

Notes

- All dimensions in the tables above are based on ASME A17.1S-2005 Part 2.
- SS: Single Slide doors, CO: Center Open doors
- Hoistway dimensions (AH, BH, PD, OH) are for standard specifications.
- The AH dimensions indicate for one car. For AH dimensions of 2 and 3 Car, please refer to right table. AU dimension in 2 and 3 Car layout is same as AH of 1 Car. These are values after waterproofing and do not include plumb tolerance.
- Pit depth in this drawing is obtained when floor recess is 3/4" [19]. When floor recess is greater than 3/4" [19], extend pit depth as well. Max. floor recess is 1 3/8" [35]
- The minimum OH dimensions are obtained on condition that:
A. Canopy height = 8'-0" (2438mm)
B. OH dimensions does not include the hoisting beams.
- Some of specifications require more than the value 8'-11" (2717mm) as a minimum height. Please consult us if floor height is less than 8'-11" (2717mm).

AH dimension for 2 and 3 Car

Opening	Capacity (lbs) [kg]	AH dimension (ft./in.) [mm]	
		2 Car	3 Car
Front	2000 [900]	15'-4" [4674]	23'-2" [7061]
	2500 [1150]	17'-4" [5283]	26'-2" [7976]
	3000 [1350]	17'-4" [5283]	26'-2" [7976]
	3500 [1600]	17'-4" [5283]	26'-2" [7976]
Front & Rear	3500 [1600]	19'-6" [5944]	

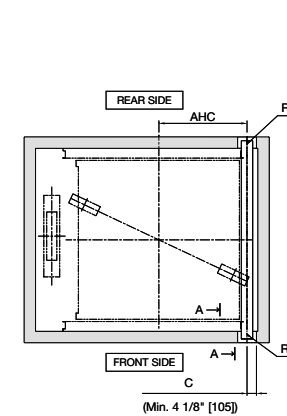
Power Feeder Data for One Car

Rated speed (fpm) [mpm]	Capacity (lbs) [kg]	Traction motor (HP) [kW]	Current at 480V*8		Power supply capacity (kVA)	Heat emission(BTU/hr) [W]	
			FLU (A)	FLAcc (A)		Hoistway*9	Control panel
200 [60]	2000 [900]	7.5 [5.6]	12	21	7	1190 [350]	2730 [800]
	2500 [1150]	9.5 [7.1]	15	26	8	1540 [450]	3240 [950]
	3000 [1350]	11.9 [8.9]	18	30	9	1710 [500]	3750 [1100]
	3500 [1600]	13.3 [9.9]	20	35	10	1880 [550]	4270 [1250]
350 [105]	2000 [900]	13.0 [9.7]	20	35	10	1880 [550]	4270 [1250]
	2500 [1150]	17.4 [13]	25	43	13	2220 [650]	5120 [1500]
	3000 [1350]	20.1 [15]	30	52	15	2560 [750]	5970 [1750]
	3500 [1600]	24.1 [18]	34	60	17	3070 [900]	7000 [2050]

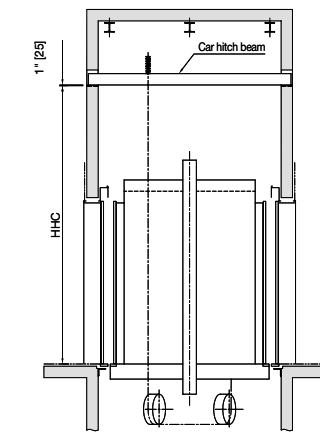
Notes

- If power supply voltage is other than 480V, FLU and FLAcc current are obtained by the following formulas.
FLU, FLAcc current (A) at E = (Current at 480V) x (480 / E)
(E: Power supply voltage (V))
- Heat emitted from car lighting is not included.

Car Hitch Beam



Hoistway plan



Hoistway section

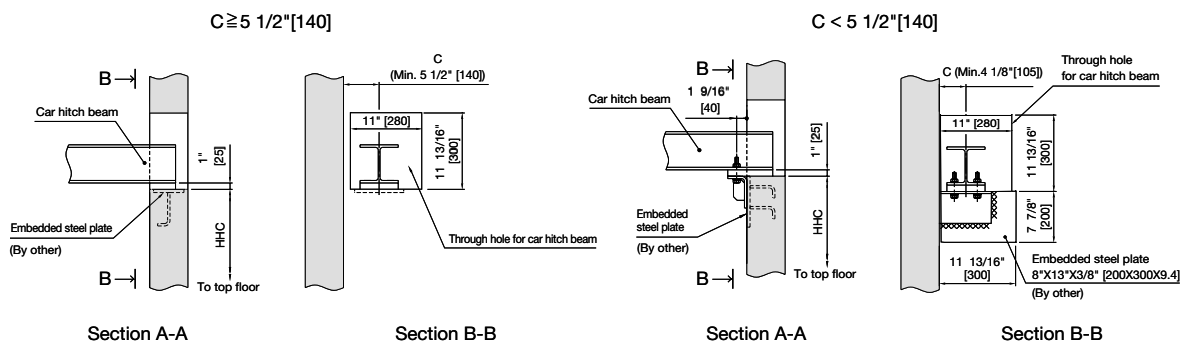
Height of through hole for car hitch beam [HHC]

Rated speed (fpm) [mpm]	HHC (ft./in.) [mm]
200 [60]	11'-10 1/8" [3610]
350 [105]	12'-1 1/8" [3686]

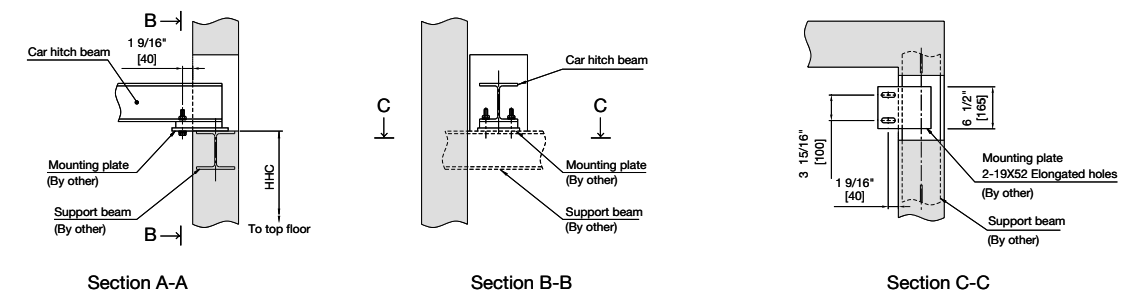
Reaction loads

Opening	Capacity (lbs) [kg]	RA (lbs) [kN]		RB (lbs) [kN]	
		Static	Dynamic	Static	Dynamic
Front	2000 [900]	3200 [14]	6300 [28]	900 [4]	1800 [8]
	2500 [1150]	3900 [17]	7500 [33]	1200 [5]	2100 [9]
	3000 [1350]	3900 [17]	7700 [34]	1200 [5]	2100 [9]
	3500 [1600]	4300 [19]	8400 [37]	1200 [5]	2300 [10]
Front & rear	3500 [1600]	3900 [17]	7700 [34]	1500 [7]	2800 [13]

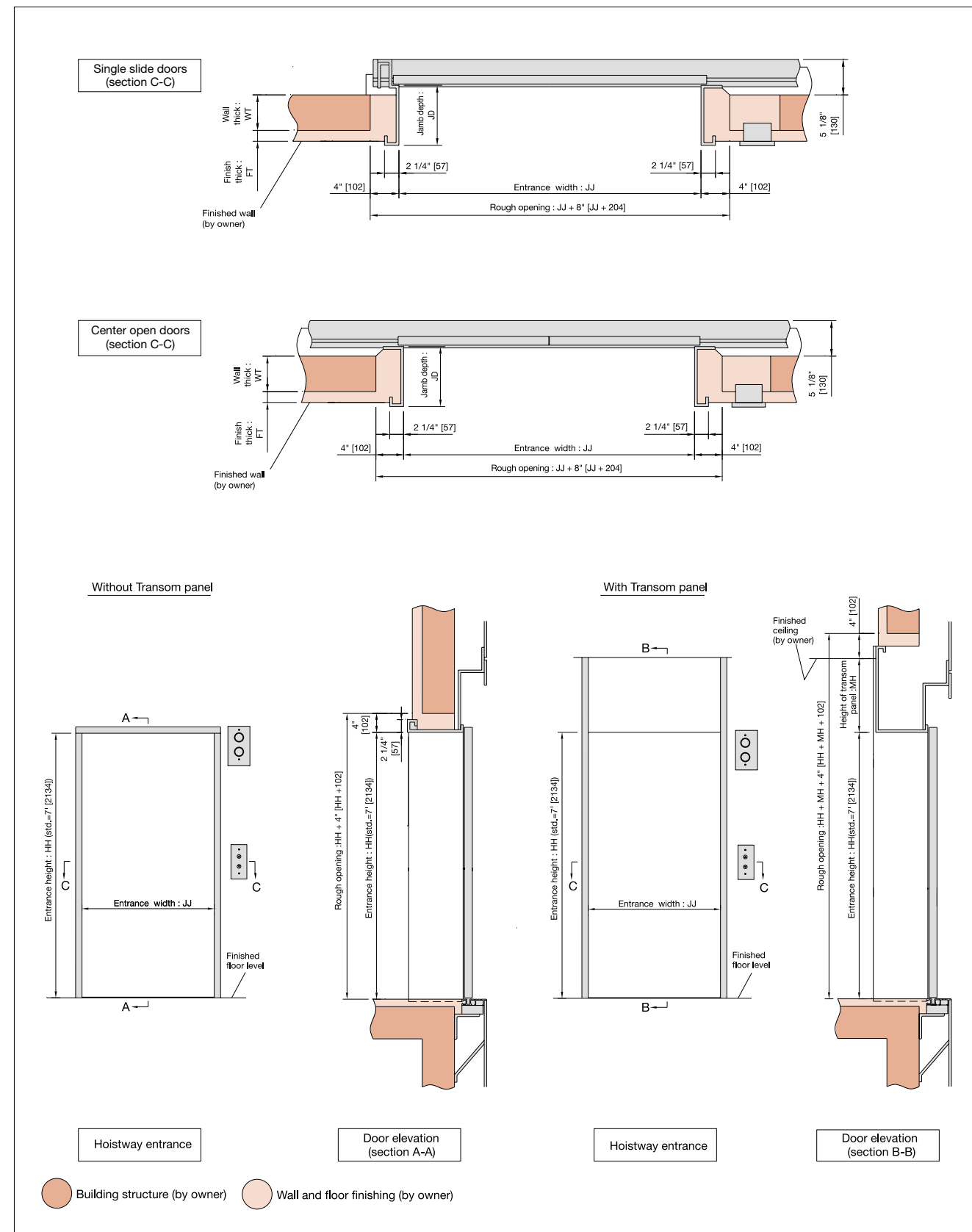
For Concrete and Masonry Wall Construction



For Dry Wall Construction



For Concrete and Masonry Wall Construction



For Dry Wall Construction

