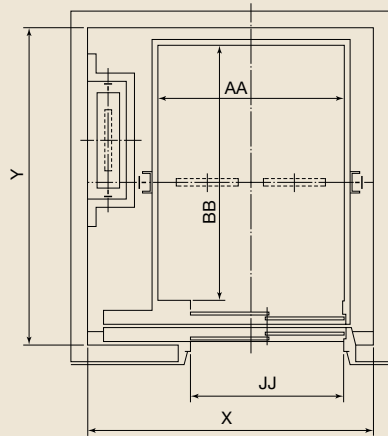


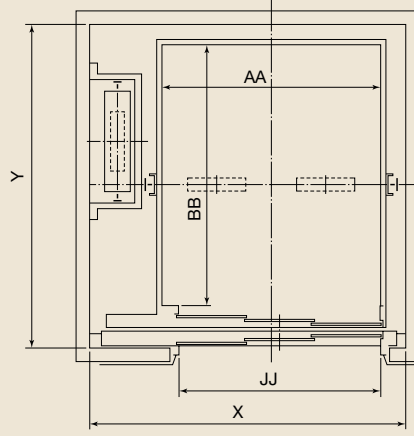
# Layout Drawings and Dimensions for One Gate (1D1G) For JIS Code

The following dimension is shown in Japan code.

Hoistway Plan for 2-panel side opening door (2S)

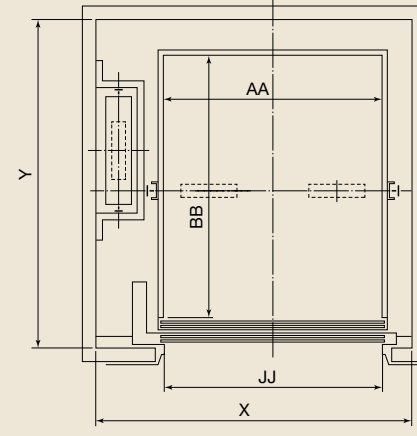


Hoistway Plan for 3-panel side opening door (3S)

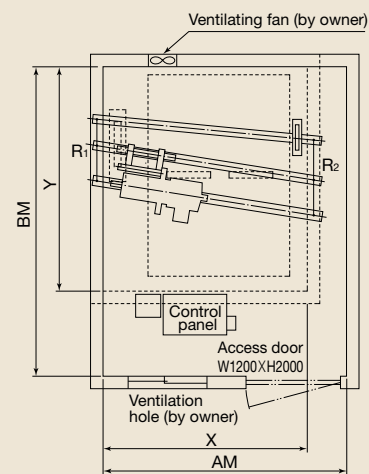


Hoistway Plan for 2-panel upward opening door (2U)

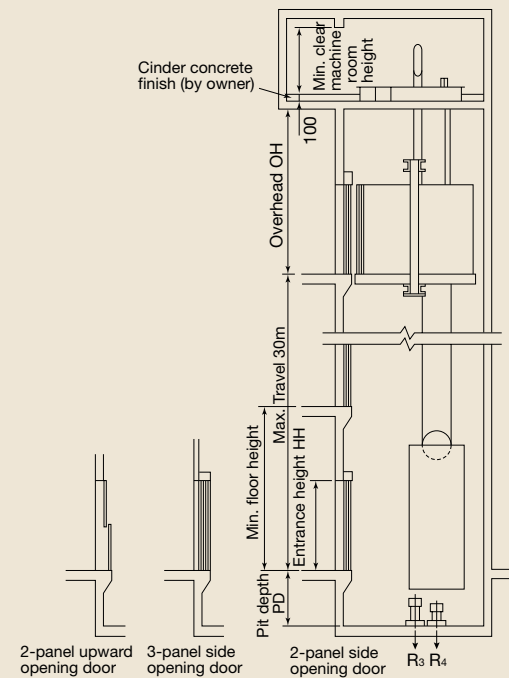
It can not be applied for EN-81-1 or GB code.



Machine Room Plan



Hoistway Section



Type	Capacity (kg)	Speed (m/min.)	Motor (kW)*1	Machine room (mm) AM×BM	Pit depth PD (mm)	Door type	Hoistway (mm) X×Y	Min. floor height (mm)	Overhead OH (mm)	Reaction loads (kN)*2			
										Machine room		Pit	
										R1	R2	R3	R4
F-750-2S	750	45	7.5	2600 × 3950	1250	2S	2200 × 2900	2800	4450	57.9	41.2	70.6	55.4
		60	9.5		1550				4650			71.6	55.4
F-1000-2S	1000	45	7.5	3150 × 3950	1250	2S	2600 × 2900	2800	4450	74.6	43.1	80.4	66.2
		60	9.5		1550				4650			84.8	73.1
F-1500-2S	1500	45	9.5	3600 × 4050	1250	2S	3150 × 3000	2800	4450	101	53.9	119.6	82.4
		60	13		1550				4650			129.4	88.3
F-2000-2S	2000	45	13	3600 × 4250	1250	2S	3150 × 3400	2800	4450	121.6	63.7	139.2	103
		60	18.5		1550				4650			150	109.8
F-2500-3S	2500	45	18.5	4000 × 4400	1250	3S	3600 × 3700	3300	4850	148.1	81.4	192.2	144.2
		60	22		1550				5050			206	154
F-2500-2U*4	2500	45	18.5	4000 × 4400	1250	2U	3600 × 3700	4500	4850	155.9	80.4	192.2	144.2
		60	22		1550				5050			206	154
F-2500-3U*4	2500	45	18.5	4000 × 4400	1250	3U	3600 × 3700	3950	4850	155.9	80.4	192.2	144.2
		60	22		1550				5050			206	154
F-3000-3S	3000	45	18.5	4100 × 4800	1250	3S	3750 × 4100	3300	4850	166.7	92.2	208	154
		60	26		1800				5050			223	165
F-3000-2U*4	3000	45	18.5	4100 × 4800	1250	2U	3750 × 4100	4500	4850	174.5	92.2	208	154
		60	26		1800				5050			223	165
F-3000-3U*4	3000	45	18.5	4100 × 4800	1250	3U	3750 × 4100	3950	4850	174.5	92.2	208	154
		60	26		1800				5050			223	165

\*1: Since required motor power varies according to the specifications, such as elevator cage weight, etc., please consult our sales agency for details.

\*2: Since reaction load varies according to the specifications, please consult our sales agency for details.

\*3: In cases where capacity exceeds 3000kg, please consult our sales agency for details.

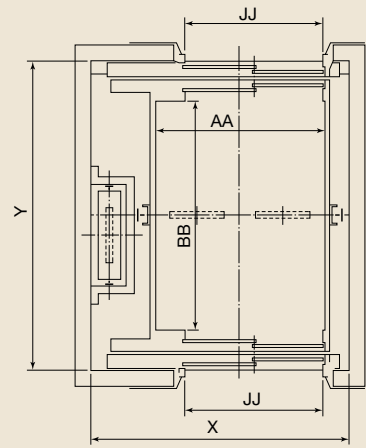
\*4: 2U, 3U door type can not be applied for EN-81-1 or GB code.

# Layout Drawings and Dimensions for Two Gates (1D2G & 2D2G) For JIS Code

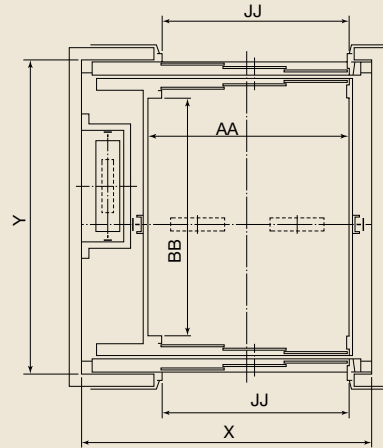
GFM-T GFM-T GFM-T  
GFM-T GFM-T GFM-T GFM-T  
GFM-T GFM-T GFM-T GFM-T

The following dimension is shown in Japan code.

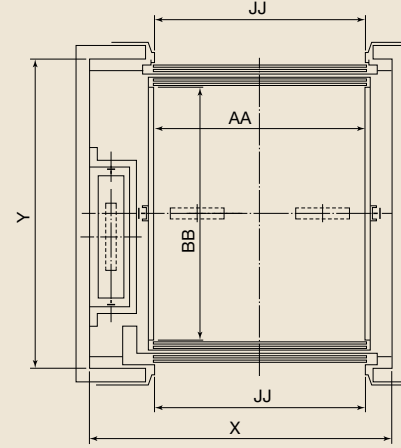
Hoistway Plan for 2-panel side opening door (2S)



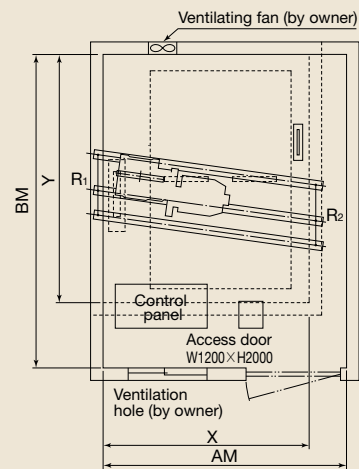
Hoistway Plan for 3-panel side opening door (3S)



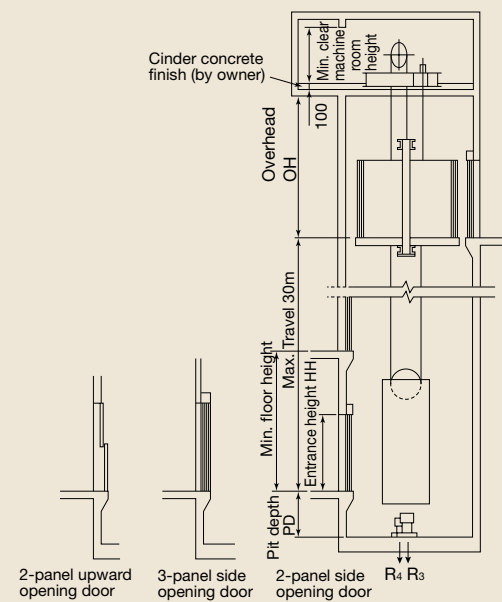
Hoistway Plan for 2-panel upward opening door (2U)



Machine Room Plan



Hoistway Section



Type	Capacity (kg)	Speed (m/min.)	Motor (kW)*1	Machine room (mm)	Pit depth PD (mm)	Door type	Hoistway (mm) X×Y	Min. floor height (mm)	Overhead OH (mm)	Reaction loads (kN)*2			
										Machine room		Pit	
				AM×BM	R1	R2	R3	R4					
F-750-2S	750	45	7.5	2600 × 3950	1250	2S	2200 × 3110	2800	4450	65.7	46.1	77.4	64.7
		60	9.5		1550				4650			78.5	69.6
F-1000-2S	1000	45	7.5	3150 × 3950	1250	2S	2600 × 3110	2800	4450	83.4	48	96.1	75.5
		60	9.5		1550				4650			104	80.4
F-1500-2S	1500	45	9.5	3600 × 4050	1250	2S	3150 × 3210	2800	4450	112.8	59.8	127.4	98
		60	13		1550				4650			137.2	106.8
F-2000-2S	2000	45	13	3600 × 4250	1250	2S	3150 × 3610	2800	4450	135.3	69.6	151	116.7
		60	18.5		1550				4650			162.8	125.5
F-2500-3S	2500	45	18.5	4000 × 4400	1250	3S	3600 × 3970	3300	4850	163.8	84.3	205	157
		60	22		1550				5050			219	168
F-2500-2U*4	2500	45	18.5	4000 × 4400	1250	2U	3600 × 3680	4500	4850	166.7	89.3	205	157
		60	22		1550				5050			219	168
F-2500-3U*4	2500	45	18.5	4000 × 4400	1250	3U	3600 × 3680	3950	4850	166.7	89.3	205	157
		60	22		1550				5050			219	168
F-3000-3S	3000	45	18.5	4100 × 4800	1250	3S	3750 × 4370	3300	4850	201	106.9	217.8	182.4
		60	26		1800				5050			233	195
F-3000-2U*4	3000	45	18.5	4100 × 4800	1250	2U	3750 × 4080	4500	4850	206.9	110.8	217.8	162.8
		60	26		1800				5050			233	174
F-3000-3U*4	3000	45	18.5	4100 × 4800	1250	3U	3750 × 4080	3950	4850	206.9	110.8	217.8	162.8
		60	26		1800				5050			233	174

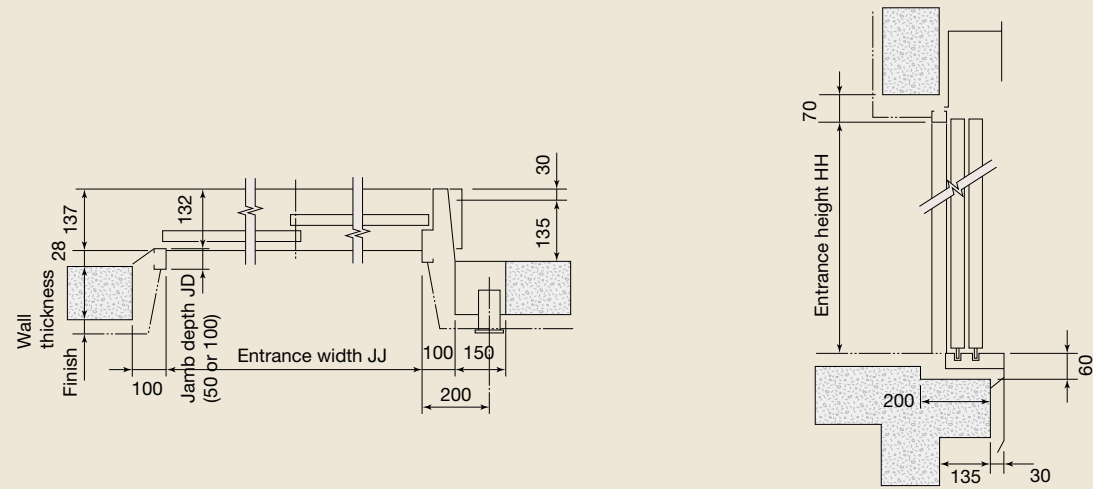
\*1: Since required motor power varies according to the specifications, such as elevator cage weight, etc., please consult our sales agency for details.

\*2: Since reaction load varies according to the specifications, please consult our sales agency for details.

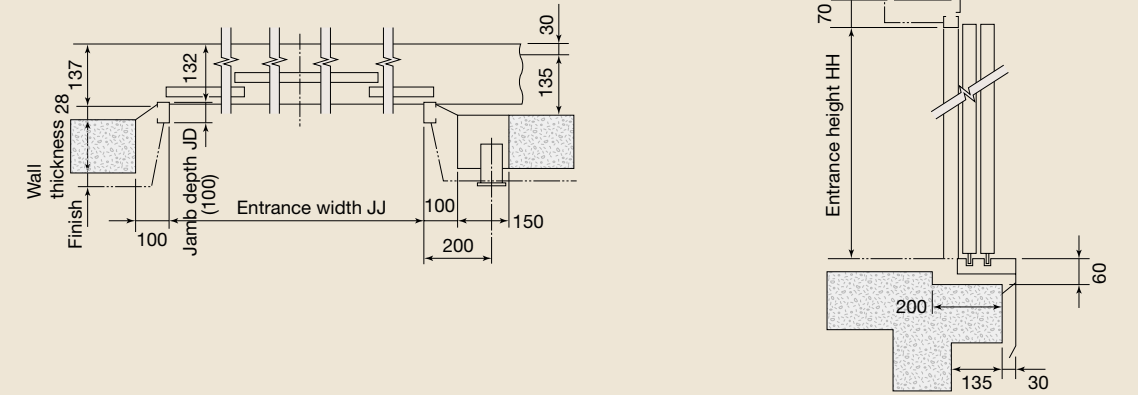
\*3: In cases where capacity exceeds 3000kg, please consult our sales agency for details.

\*4: 2U, 3U door type can not be applied for EN-81-1 or GB code.

## 2-panel side opening door (2S)

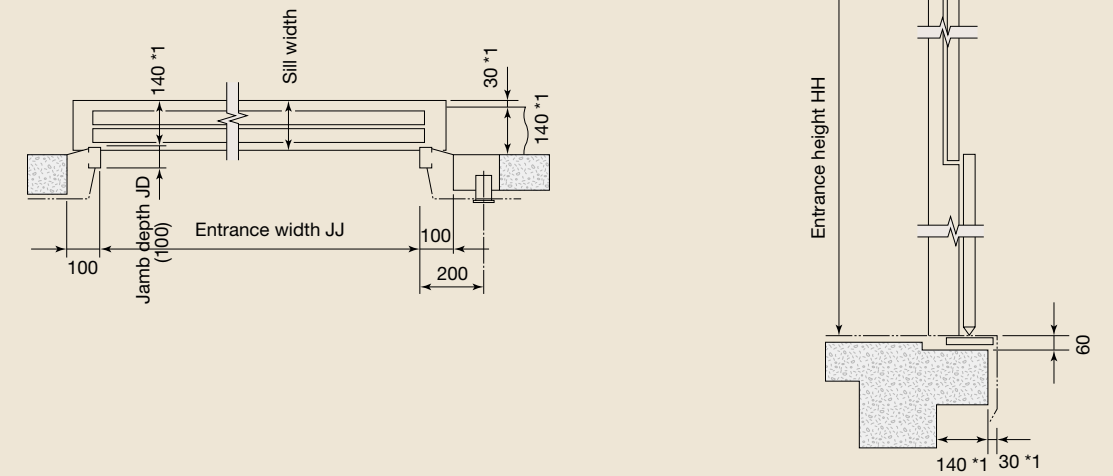


## 4-panel center opening door (2C0)

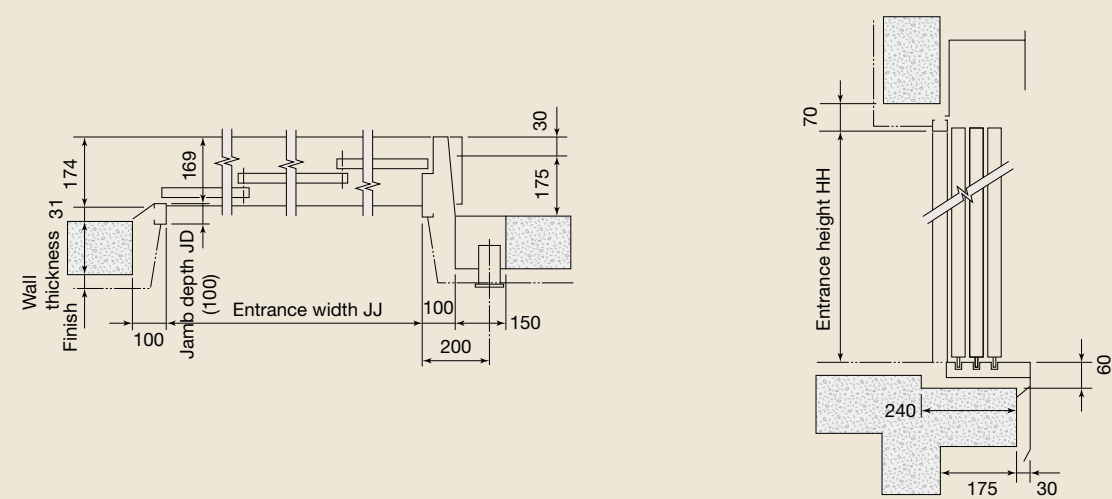


## 2-panel upward opening door (2U)

It can not be applied for EN-81-1 or GB code.

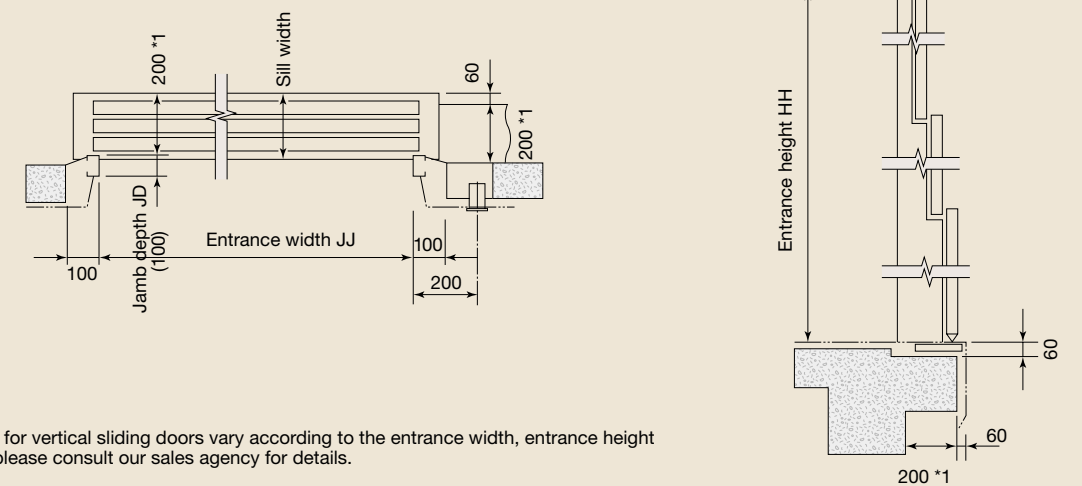


## 3-panel side opening door (3S)



## 3-panel upward opening door (3U)

It can not be applied for EN-81-1 or GB code.



\*1: Since dimensions for vertical sliding doors vary according to the entrance width, entrance height and floor height, please consult our sales agency for details.